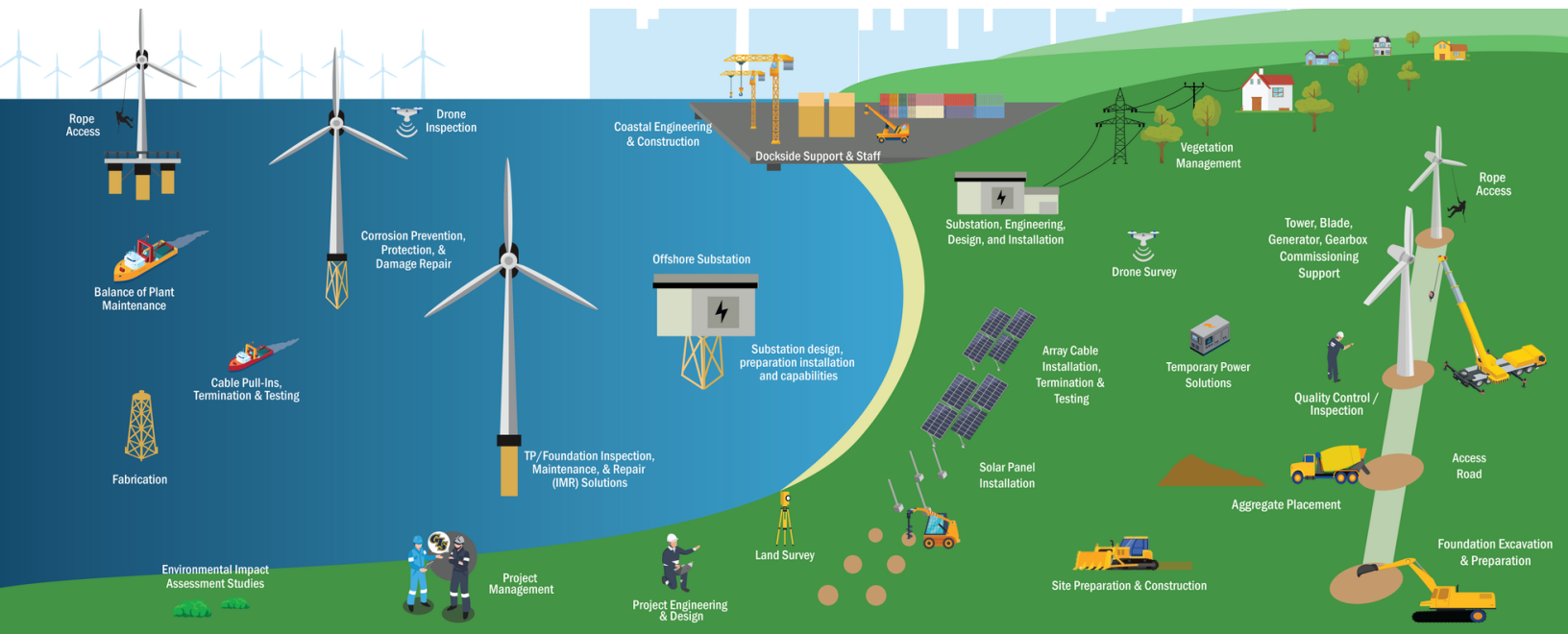




RENEWABLE ENERGY

PARTNERS IN ENERGY OF TOMORROW.

GIS services the energy sector, nationally and internationally, with capabilities that span the complete life cycle of our customers' projects. Our team of resources has the capabilities and experience to support the renewable energy sector within the Offshore Wind, Onshore Wind, and Solar Energy plant assets. We align our services with operations from the pre-commissioning phases of major developments; through the construction and commissioning; to the decommissioning phases.



OFFSHORE WIND:

- TP/Foundation Inspection, Maintenance and Repair (IMR) Solutions
- Tower, Blade, Generator, Gearbox Commissioning Support & Maintenance
- Foundation design and commissioning
- Light Steel Fabrication
- Corrosion prevention, protection and damage repair
- Engineering/Surveys Support

BALANCE OF PLANT (BOP)

- Installation and Maintenance of high-voltage electrical equipment such as transformers, switchgear, and inverters.
- Turnkey Inspection, Maintenance, and Repair (IMR) Solutions
- Cable pull-ins, Termination & Testing
- Installation and Maintenance of protection and control systems
- Substation design, preparation and installation capabilities
- ESP Offshore Installation/ Hook Up including termination and testing
- Grid Interconnection Hook Up
- Installation of meteorological masts

ONSHORE WIND / UTILITY SCALE SOLAR:

- Engineering/Survey Support
- Tower, Blade, Generator, Gearbox Commissioning Support & Maintenance
- Temporary Power Solutions
- Integrity Management
- Fabrication and Commissioning of panels racks and railings
- Solar Panel Installation, Monitoring, Performance Analysis and Maintenance
- Fabrication and Commissioning of racks and railings
- Commissioning and Start Up
- Spare Parts



ABOUT US

Established in 1948, GIS is a 70+ year-old full-service design, fabrication, and construction contractor that is centered on the people that make up the organization. GIS offers clients a single point of contact to utilize our 20+ strategically located facilities, ~3,000 employees, and 22 service lines. Serving Energy, Industrial, Infrastructure, and Power markets, we align our services with operations from the conceptual stage through construction, commissioning, and asset maintenance.

For more information on our company, you can visit www.gisy.com.

SAFETY

LIFE is the proactive, operational, and behavior-based component of GIS's comprehensive safety management program. While our Corporate HSE group focuses on compliance, training, and incident response, the LIFE processes specifically cover Operational Safety, through: comprehensive work planning; increasing awareness of work area & task risks; intervention techniques for redirecting at-risk behaviors; embedded field presence; quarterly initiatives focused on observed areas of risk; and visible leadership engagement all while encompassing the Human Performance Improvement Principles.

PEOPLE

GIS employees are at the heart of our business. We are committed to developing and sustaining long-standing relationships with both our internal and external clients. Each employee is committed to excellence and continuous improvement. We understand the personal component of our business and are built upon core values that drive a partnership-minded approach to providing valued solutions to our clients while understanding our clients' operations, goals, and bottom line drivers. Our people believe greater value is created by aligning our goals with those of our clients and striving for innovation and excellence with every opportunity.



PUTTING PEOPLE FIRST

SINCE 1948

CORPORATE OFFICE

18838 Hwy 3235 | Galliano, LA 70354
985.475.5238

CONTACT INFORMATION

Todd Berthelot | Executive Vice President

225.413.3456 | tberthelot@gisy.com

Matheus Chagas | Director of Renewables

713.922.7451 | mchagas@gisy.com

OFFICE LOCATIONS

LOUISIANA:

Abbeville | Baton Rouge | Broussard | Brusly | Cut Off | Fourchon
Franklinton | Galliano | Houma | Lafitte | Larose | Napoleonville
New Orleans | New Roads | Thibodaux | Youngsville

OKLAHOMA:

Edmond

TEXAS:

Baird | Houston | Odessa



985.475.5238

proposals@gisy.com