



# OFFSHORE CONSTRUCTION MANAGEMENT

## FLEXIBLE. SCALABLE. VERSATILE.

The GIS Project Management team offers clients a single point of contact to utilize our 20+ strategically located facilities, ~3,200 employees, and 22 service lines. Serving upstream, midstream, and downstream markets, we align our services with operations from the pre-commissioning phases, through the construction and commissioning, to the ultimate decommissioning phases. GIS's Project Management service line offers comprehensive planning and development of execution work packs to reduce downtime and preventable delays on offshore and onshore capital and turnaround projects.

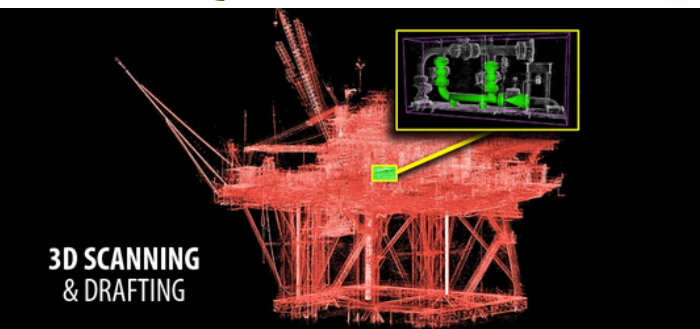
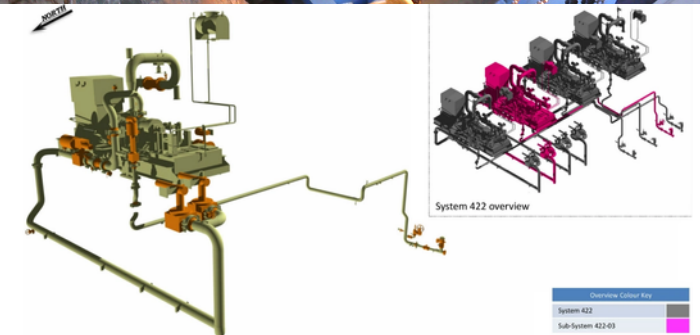


## SERVICES

- ▶ Conceptual Project Evaluation
- ▶ 3D Scanning & Drafting
- ▶ Piping & Structural Design Plans
- ▶ Construction & Installation
- ▶ Maintenance & Turnarounds
- ▶ Asset Decommission

## The streamlined process addresses 3 historical challenges in construction:

- ▶ Bridge the gap between engineering and execution.
- ▶ Accurate and detailed communication tool needed by field crews.
- ▶ Create a cost effective tool that's suited for streamlined budgets.



3D SCANNING  
& DRAFTING



ENERGY • INDUSTRIAL • INFRASTRUCTURE • POWER

WWW.GISY.COM

## ABOUT US

GISEng has been dedicated to providing high-quality, responsive professional services that clients need to achieve success. GISEng has grown to nearly 200 employees in just six years of business; this market emergence demonstrates the company's ability to provide trusted services with enthusiasm, diligence, and creativity. GISEng is a multi-discipline engineering, surveying and construction management firm providing services to customer in the Energy, Industrial, Power and Public Works sectors. GISEng is a subsidiary of GIS Holdings, LLC which was established in 1948. With 20+ strategically located facilities, ~3,200 employees, and 22 service lines GIS is capable of offering full-service design, fabrication and construction services to clients as a single point of contact.

For more information on our company, you can visit [www.gisy.com](http://www.gisy.com)

## SAFETY

**LIFE** is the proactive, operational, and behavior-based component of GIS's comprehensive safety management program. While our Corporate HSE group focuses on compliance, training, and incident response, the LIFE processes specifically cover Operational Safety, through: comprehensive work planning; increasing awareness of work area & task risks; intervention techniques for redirecting at-risk behaviors; embedded field presence; quarterly initiatives focused on observed areas of risk; and visible leadership engagement all while encompassing the Human Performance Improvement Principles.

## PEOPLE

GIS employees are at the heart of our business. We are committed to developing and sustaining long-standing relationships with both our internal and external clients. Each employee is committed to excellence and continuous improvement. We understand the personal component of our business and are built upon core values that drive a partnership-minded approach to providing valued solutions to our clients while understanding our clients' operations, goals, and bottom line drivers. Our people believe greater value is created by aligning our goals with those of our clients and striving for innovation and excellence with every opportunity.



# PUTTING PEOPLE FIRST

## SINCE 1948

---

### CORPORATE HEADQUARTERS

18838 HWY 3235 | GALLIANO, LA 70354

### CONTACT INFORMATION

**Adam Toups | VP of Construction Management**

504-364-4779 | [atoups@gisy.com](mailto:atoups@gisy.com)

**Mike Richoux | Senior Advisor**

985-475-5238 | [mrichoux@gisy.com](mailto:mrichoux@gisy.com)

### OFFICE LOCATIONS

#### LOUISIANA:

Abbeville | Baton Rouge | Broussard | Brusly | Cut Off | Fourchon  
Franklinton | Galliano | Houma | Lafitte | Larose | Napoleonville  
New Orleans | New Roads | Thibodaux | Youngsville

#### OKLAHOMA:

Edmond

#### TEXAS:

Baird | Houston | Odessa



985.475.5238

[proposals@gisy.com](mailto:proposals@gisy.com)