

# QuikDeck™

Suspended Access System

---

## TECHNICAL DATA SHEET



- Versatile
- Easy to Assemble
- Modular
- Stable

## QuikDeck™ Suspended Access System

The versatile Safway® QuikDeck™ Suspended Access System's modular design can be assembled from just a few basic components and made to fit any shape and size.

### Capacity

**Live Load Capacity:** Up to 75 pounds per square foot. See Capacity Chart on back cover.

### System Components

**Joists:** Supports plywood Decking Panel. 8 ft. Joist standard, shorter lengths available. Integral carrying handles at both ends.

**Nodes:** Connects Joists using Node Pin. Chain slots provide up to (4) locations to secure suspension chain. Integral carrying handle. Octagonal shape prevents rolling.

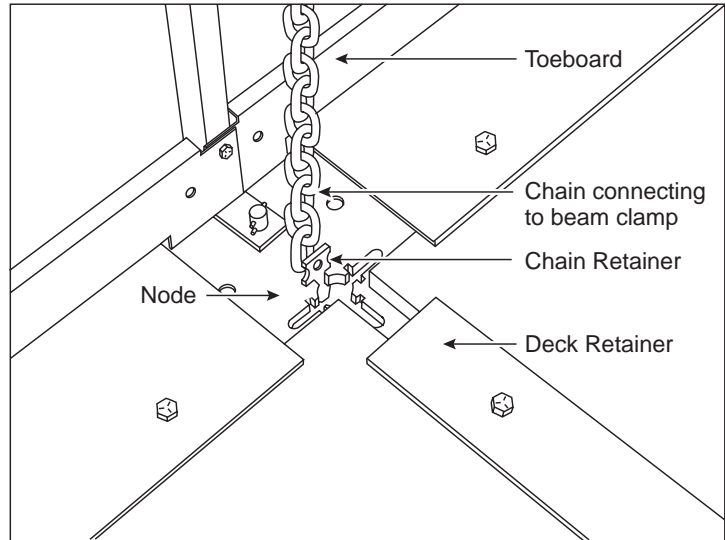
**Decking:** 3/4" BB grade OES plyform. Secured to joist system.

**Railing Post:** Provides support for Railing. Connects to Node using standard Node Pin.

**Connectors:** 3/4" diameter, high strength steel pin connects the joist and node.

**Chain Suspension:** Suspends platform from Beam Clamps. Yellow powder coat finish for visibility and long service life. Six ft., 12 ft., 18 ft. and 24 ft. lengths standard, bulk chain available.

**Coating:** All steel components are galvanized or powder coated for longer life.



Chain Suspension System with Safety Locking Chain Retainer.



Workers attaching Integral Railing and Containment Post.

## Total Unit Weight

**Lightweight:** QuikDeck™ platforms are approximately 7 pounds per square foot.

**Compact for Shipping:** A 5,000 square foot platform can be shipped on a single flatbed trailer. Components can be easily assembled at the work site.

## Safety

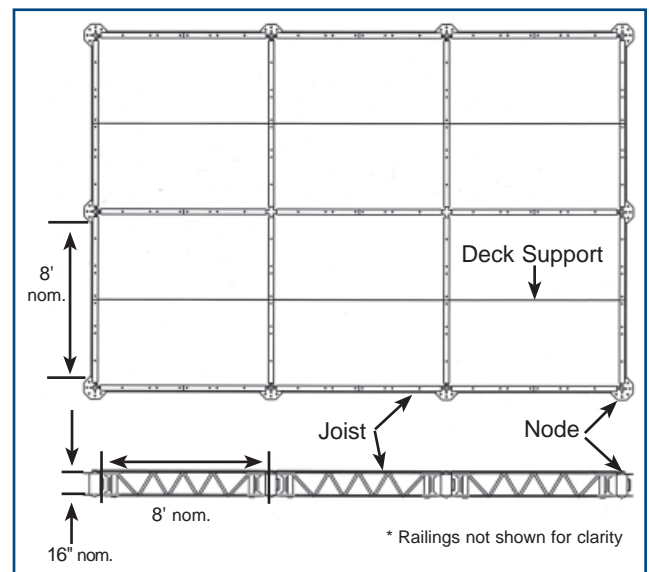
The Safway QuikDeck™ Suspended Access System meets or exceeds all applicable OSHA safety regulations. Supplied project documentation outlines Safway® QuikDeck™ safety procedures. Field representatives demonstrate operation and safety of Safway equipment. Verification of competency and compliance (user signature) required before equipment release. Man-riding platforms and components are designed with a minimum 4:1 factor of safety.



Platform view after assembly.

## QuikDeck™ Suspended Access System Layout

The Safway QuikDeck™ Suspended Access System can be configured in virtually any size and shape to accommodate your specifications.

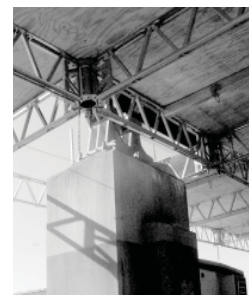


## Installation

- Designed for branch or contractor installation
- Can be built in the air
- Can be “leap-frogged” to reduce equipment cost
- Can be built on ground and hoisted into position
- Installation rates vary with site conditions

## Options

- Grit and Water Collection
- Containment or Shielding
- Wire Rope Suspenders
- Alternative Decking (includes grating)
- Scaffold Tube Railing System
- Jack Posts available for ground-based applications



Beginning Fit-Up around pier.

## QuikDeck™ System



### Features

- Rigid
- Easy to assemble
- Suspended
- Innovative
- Modular
- Flat
- Stable

### Benefits

- Reduces platform bounce
- Eliminates the need to pre-hang beam clamps
- Allows for a clear working space, fewer obstructions
- Uses chain suspenders, eliminating fist-grips
- Allows fit-up for a variety of applications
- Reduces potential injuries
- Increases worker productivity

### QuikDeck™ System Capacities

Platform Self Weight "Dead Load" 6 to 7 lbs/sq ft	Multi-Point Suspended Scaffold Applications (Man-Riding) Maximum Rated Capacities			Protective Shield Applications (Non-Man-Riding) Maximum Capacities		
	16' x 16'	8' x 16'	8' x 8'	8' x 16' *	8' x 8'	8' x 8' *
Suspender Grid Nominal Configurations	16' x 16'	8' x 16'	8' x 8'	8' x 16' *	8' x 8'	8' x 8' *
Uniform Live Load Rating	25 psf	50 psf	75 psf	100 psf	125 psf	150 psf

\* Chain is two-parted in this configuration

### DISTRIBUTED BY:



SAFWAY SERVICES, INC.

N19 W24200 Riverwood Drive  
Waukesha, WI 53188  
(800) 558-4772 ■ (262) 523-6500  
Fax: (262) 523-9808

[www.safway.com](http://www.safway.com)

### Bridge Division

Scotia-Glenville Industrial Park  
Building 202  
Scotia, NY 12302

Toll-free: (800) 582.9391  
Fax: (518) 381.4613